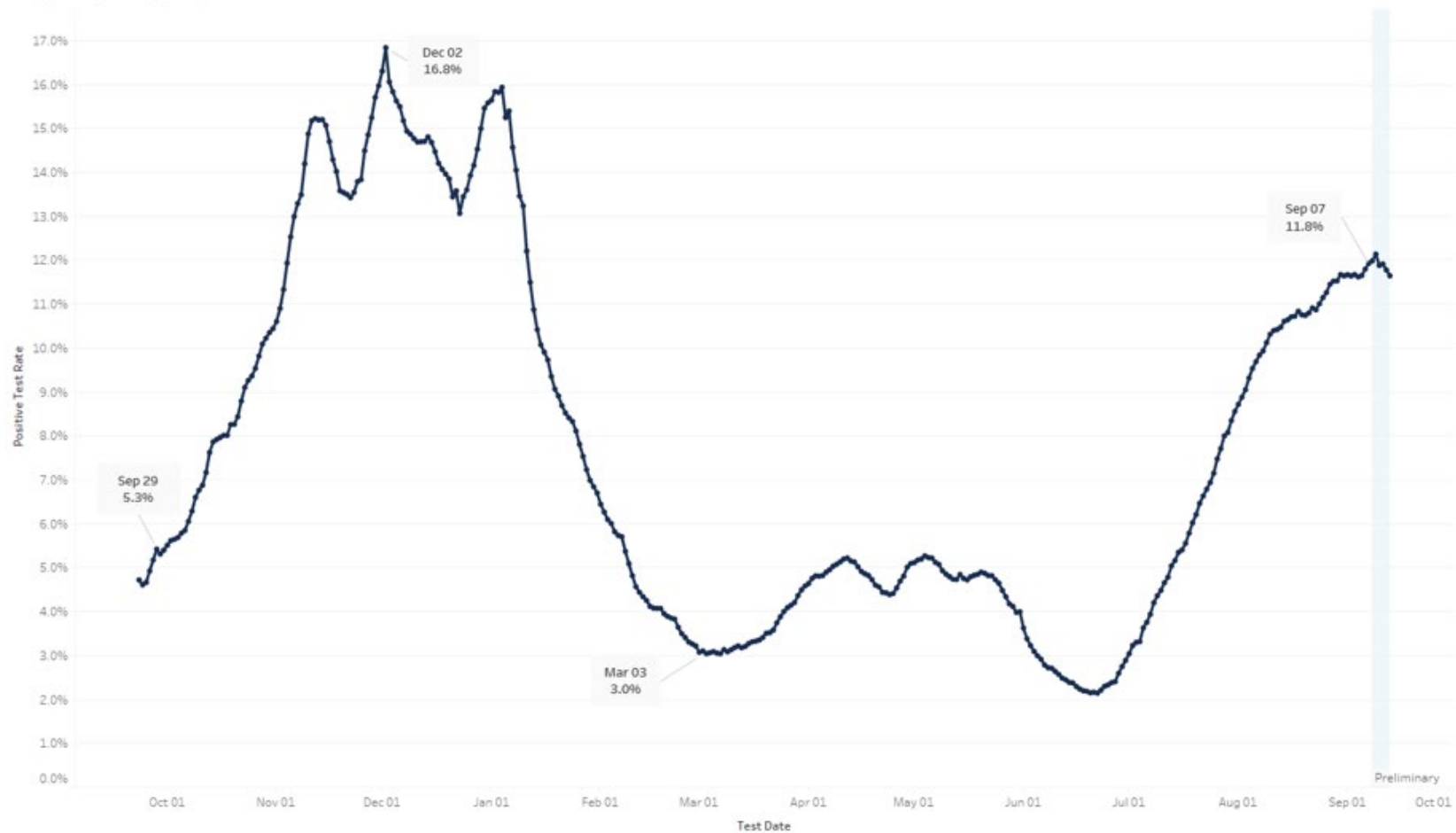


# Positivity Rate

Statewide Daily Positive Test Rate, All Tests  
7-Day Moving Average, September 23, 2020 to Present





# Advisory Level


Advisory Level  
Yellow  
Orange  
Red

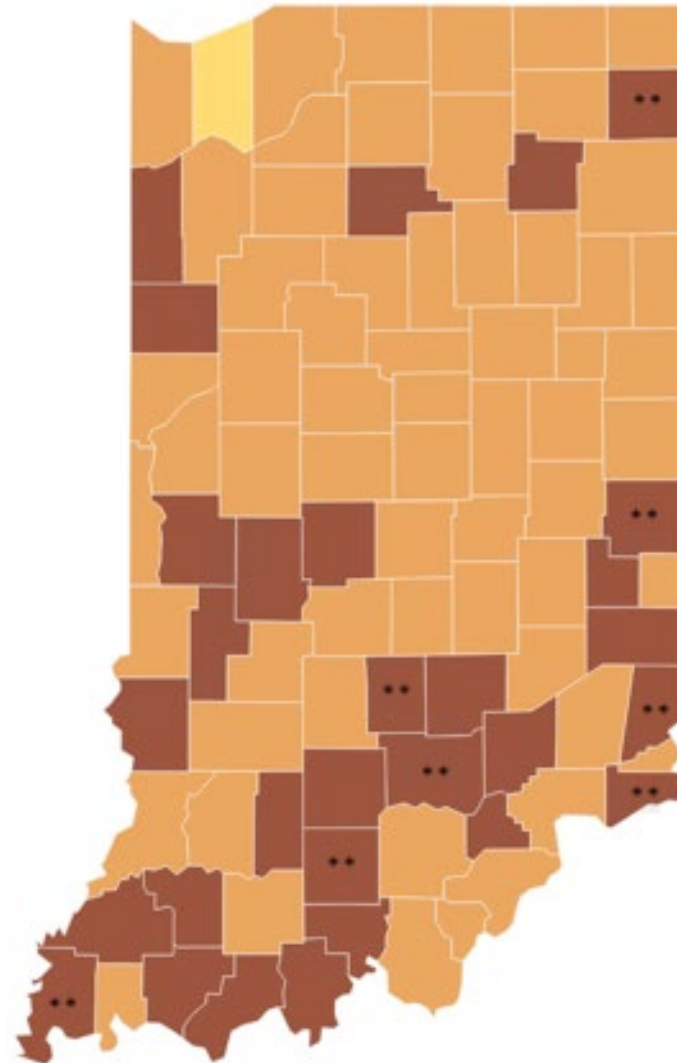
## New Cases per 100,000 Residents

Less than 10 new cases = 0  
10 to 99 new cases = 1  
100 to 199 new cases = 2  
200 or more new cases = 3

## Percent Positivity

Less than 5% = 0  
5% to 9.99% = 1  
10% to 14.99% = 2  
15% or greater = 3

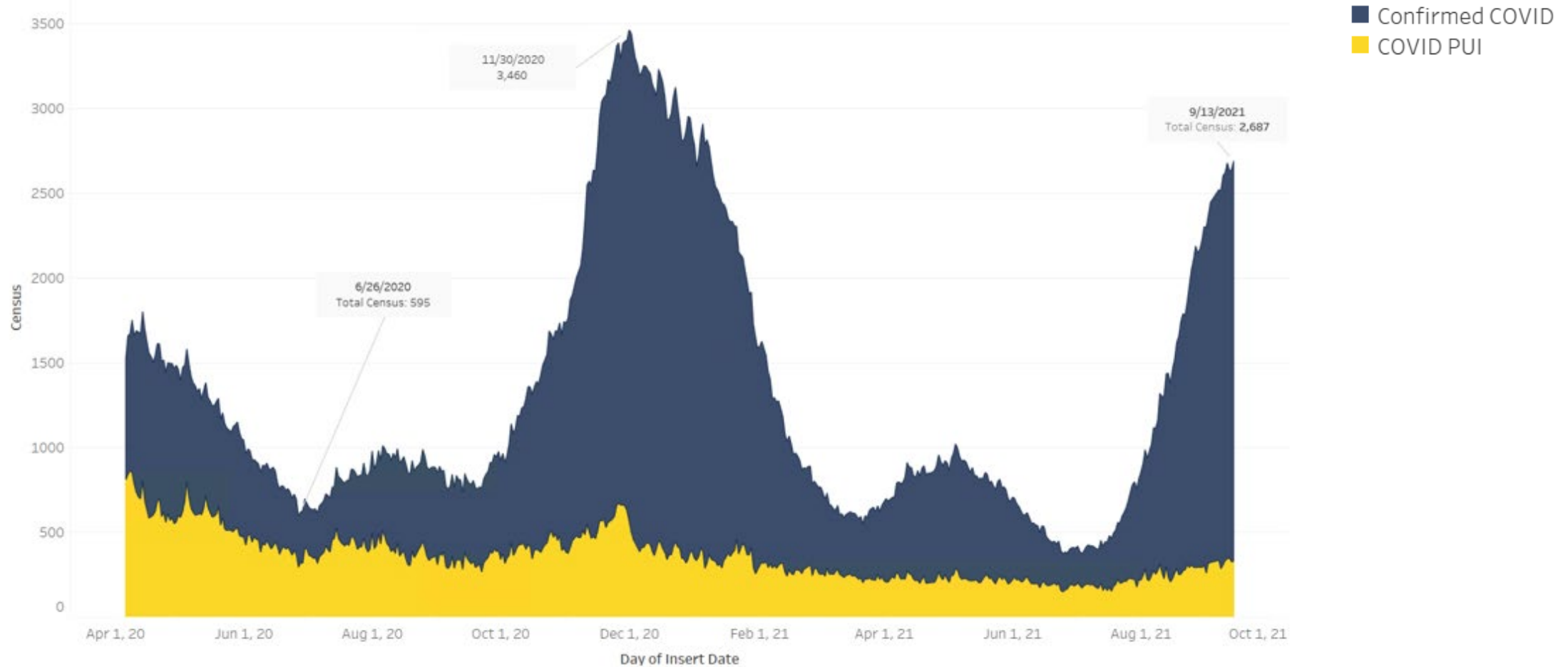
The  symbol indicates that the county has a large portion of their weekly cases in a congregate setting



# Variant Cases in Indiana

Variant	% of Samples (in current month)	Change in % of Samples (from previous month)
<b>Delta</b> / B.1.617.2	97%	-0.9%
<b>Not Variant of Concern</b> ⓘ	2%	0.8%
<b>Alpha</b> / B.1.1.7	0.9%	0.5%
<b>Gamma</b> / P.1	0.2%	-0.4%
<b>Beta</b> / B.1.351	0%	0%

# Statewide COVID-19 Hospital Census



# Fully Vaccinated by Age Group

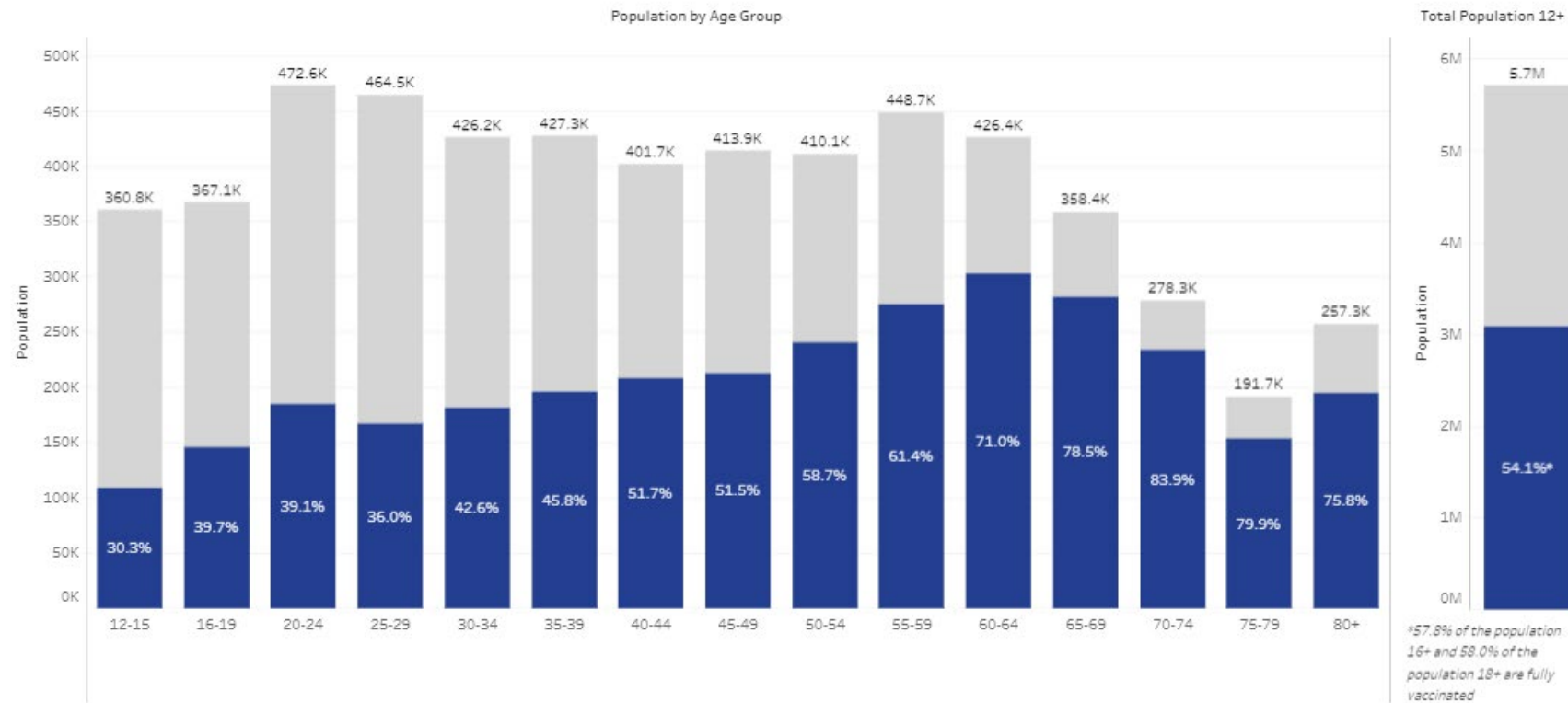
## Vaccinations Compared to State Population by Age Group

Individuals reporting a county of residence outside of Indiana are excluded from this section.

### Vaccination Sequence

- Fully Vaccinated (%)
- First Dose Administered (%)
- Partially Vaccinated (%)

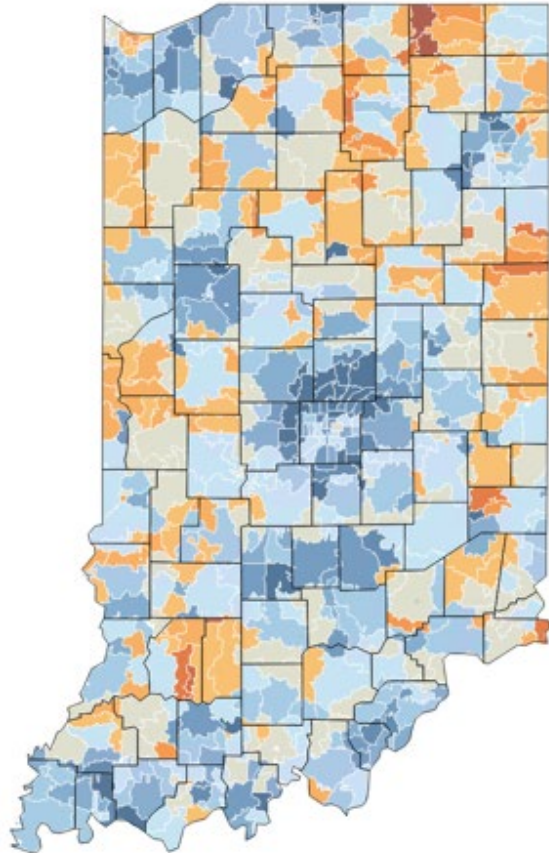
Fully Vaccinated (%)



# Vaccine Uptake by ZIP Code

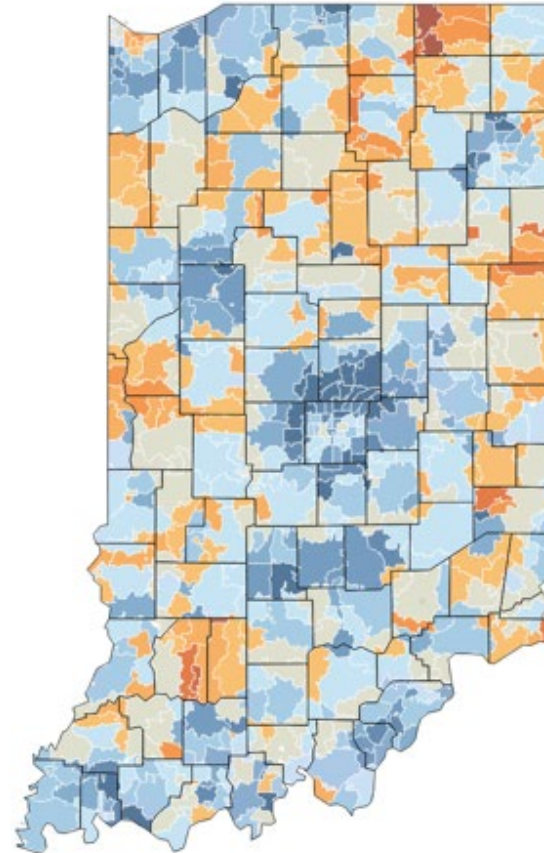
All Time

Includes vaccinations from all time

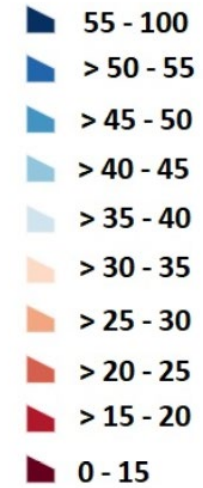


Previous Week

Includes vaccinations through 9/07/2021



Percent of Population,  
16 and Over, Fully  
Vaccinated by ZIP Code



# Multisystem inflammatory syndrome in children

Last updated at 09/07/2021 11:59 PM

Total Confirmed Cases

**106**

Age Range

**0-21 (Mean 9.8)**

Gender Distribution

**36.8% Female / 63.2% Male**

	<u>Race</u>	<u>Ethnicity</u>
	<u>% of Cases</u>	
Race		
White		54.0 %
Black or African American		30.0 %
Other Race ⓘ		20.0 %
Asian		2.0 %