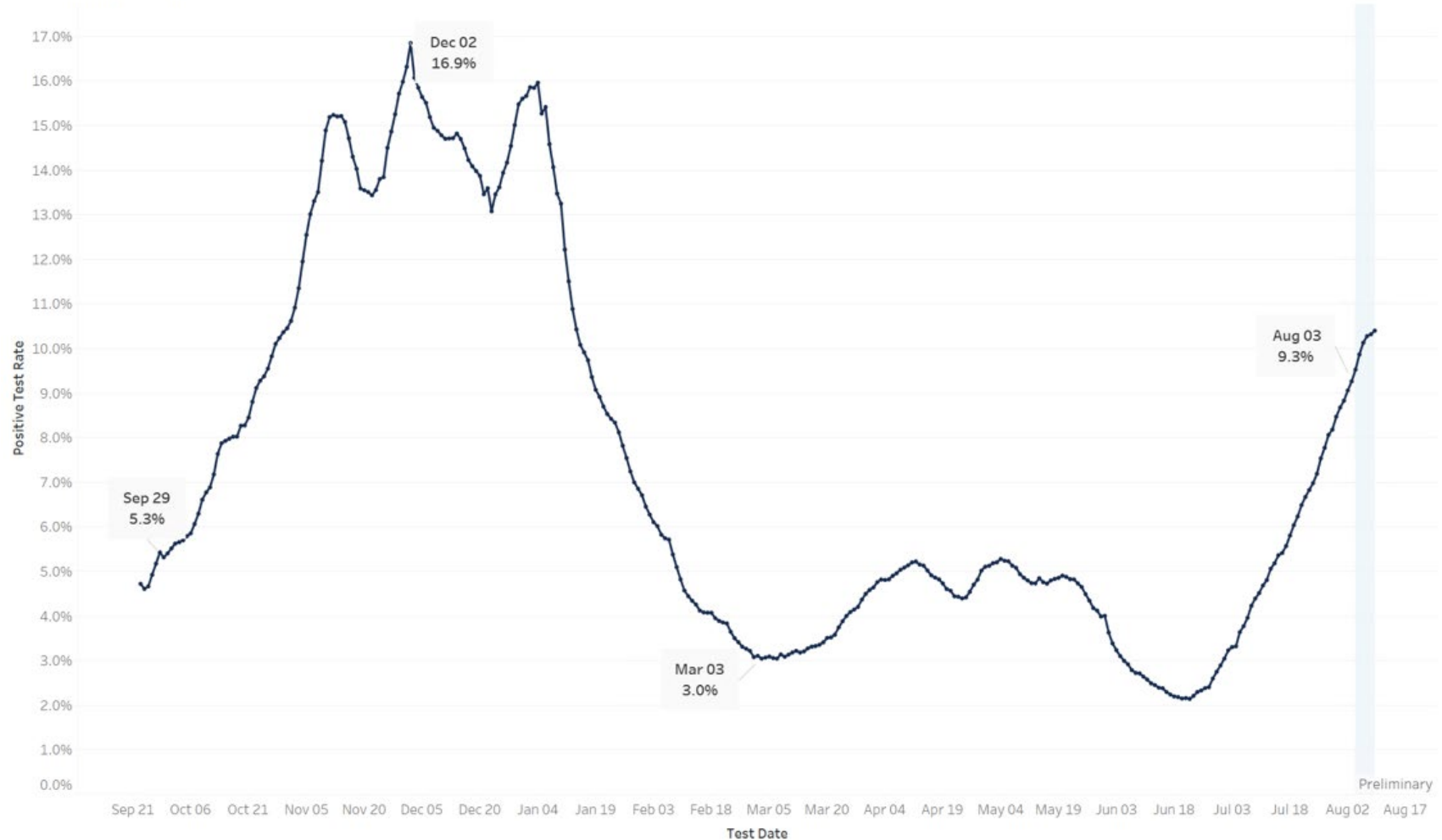


Positivity Rate

Statewide Daily Positive Test Rate, All Tests

7-Day Moving Average, September 23, 2020 to Present



Advisory Level

Advisory Level

- Yellow
- Orange
- Red

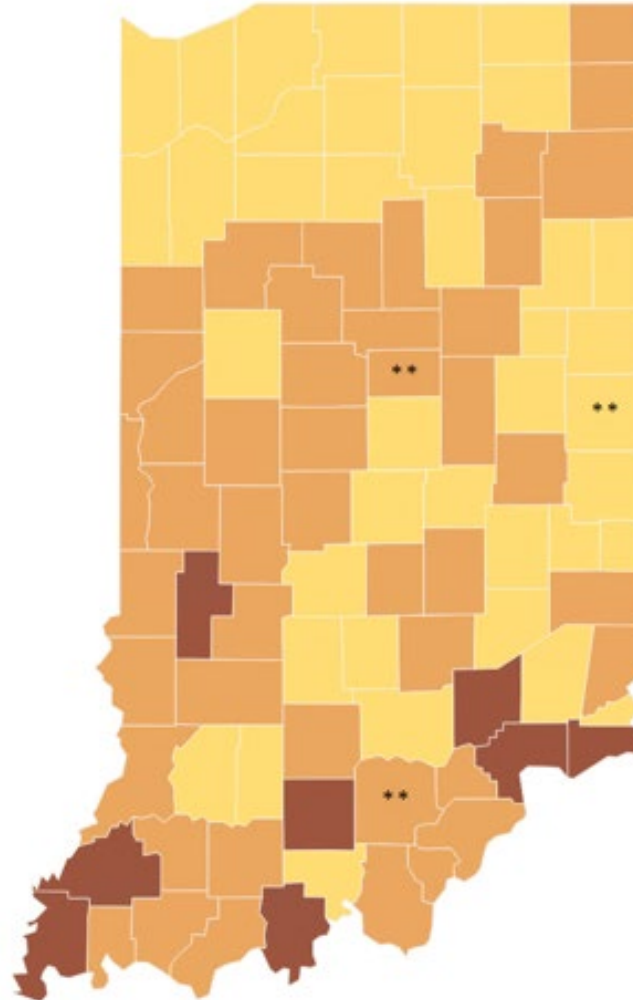
New Cases per 100,000 Residents

- Less than 10 new cases = 0
- 10 to 99 new cases = 1
- 100 to 199 new cases = 2
- 200 or more new cases = 3

Percent Positivity

- Less than 5% = 0
- 5% to 9.99% = 1
- 10% to 14.99% = 2
- 15% or greater = 3

The Δ symbol indicates that the county has a large portion of their weekly cases in a congregate setting

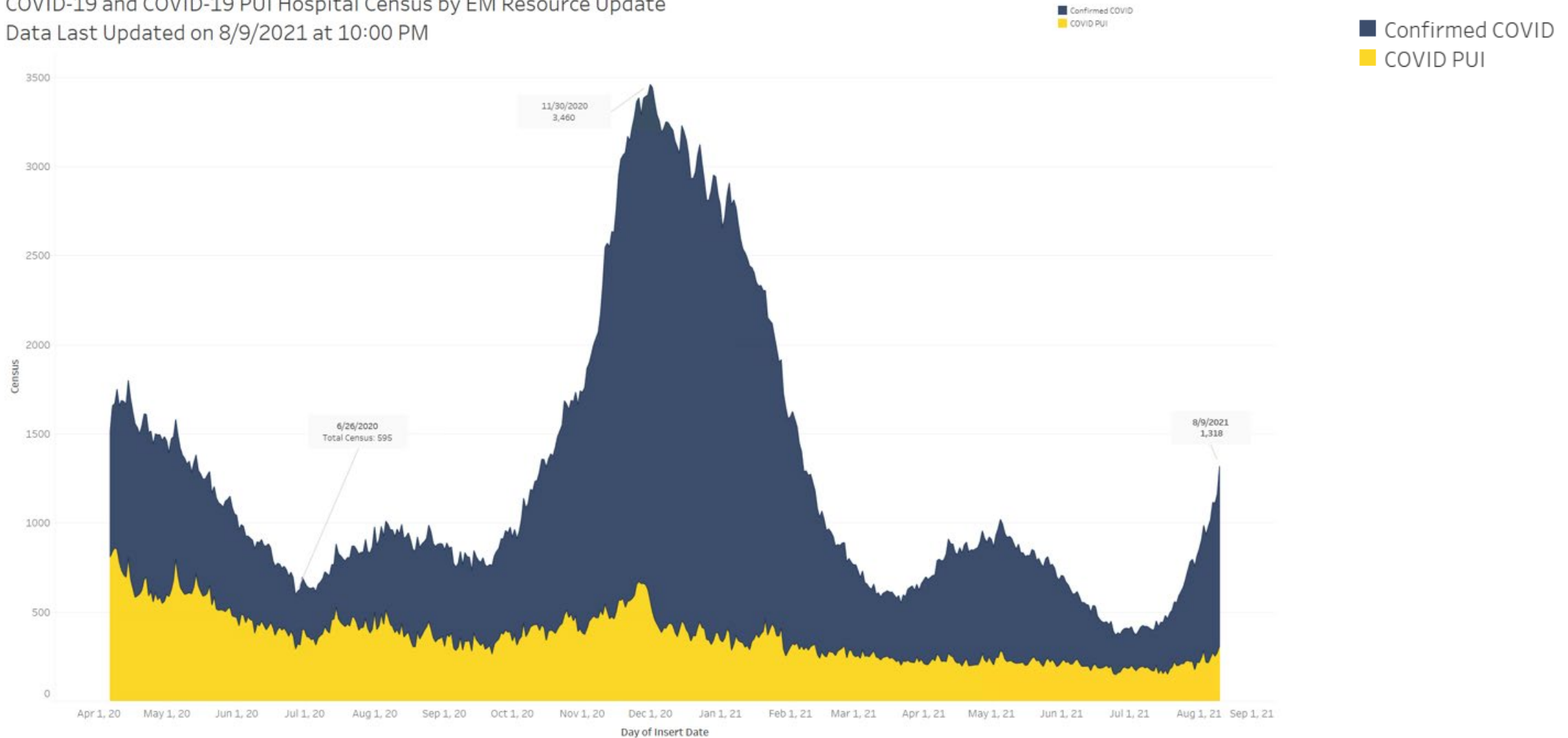


Variant Cases in Indiana

Variant	% of Samples (in current month)	Change in % of Samples (from previous month)
Delta / B.1.617.2	87.2%	23.7%
Not Variant of Concern ⓘ	7.3%	-2.2%
Alpha / B.1.1.7	2.9%	-20.2%
Gamma / P.1	2.6%	-1.3%
Beta / B.1.351	0%	0%

Statewide COVID-19 Hospital Census

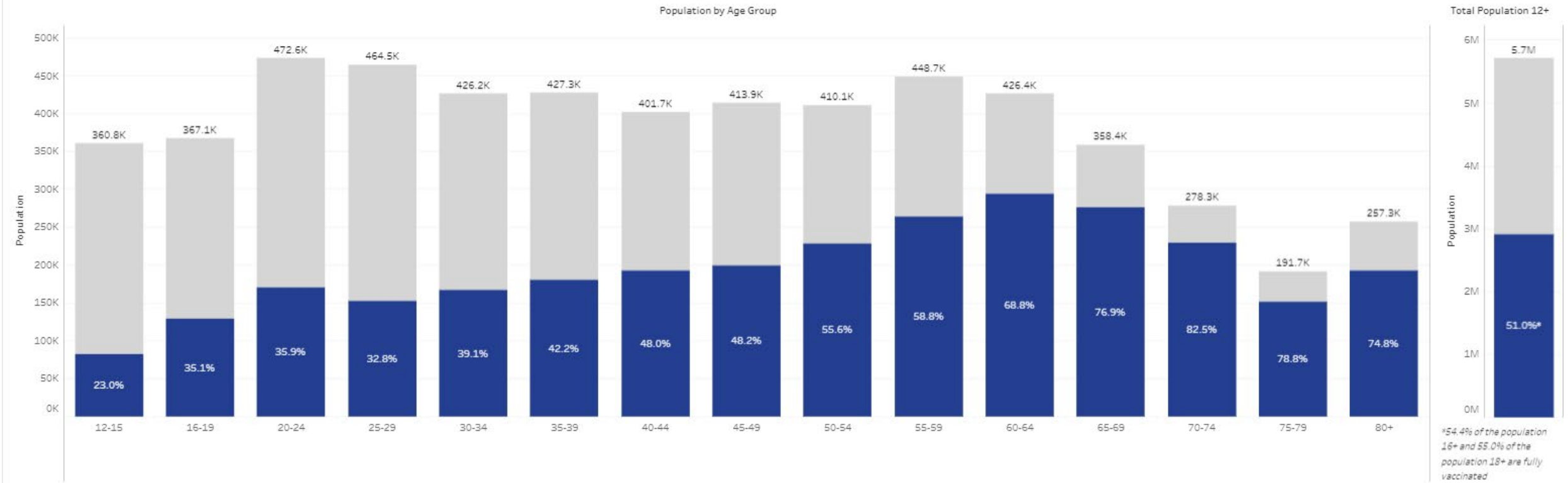
COVID-19 and COVID-19 PUI Hospital Census by EM Resource Update
Data Last Updated on 8/9/2021 at 10:00 PM



Fully Vaccinated by Age Group

Vaccination Sequence

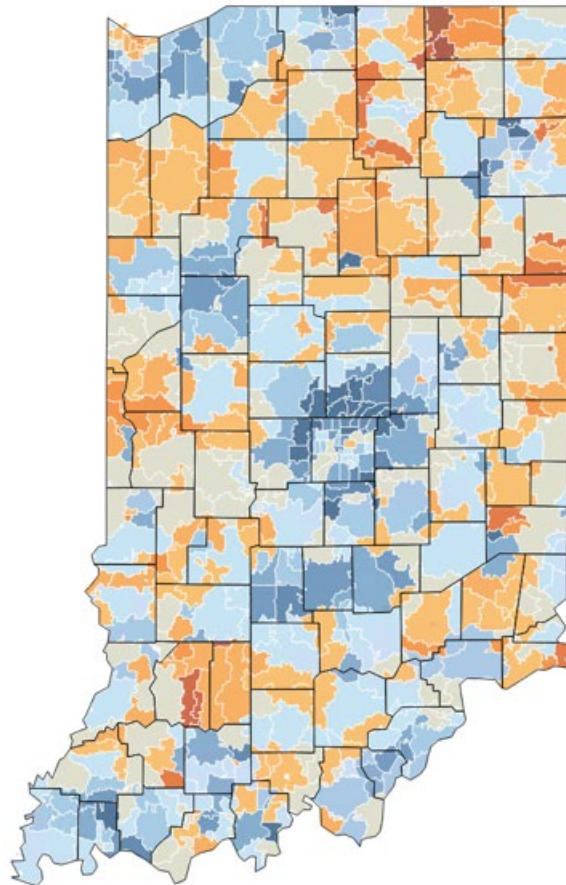
- Fully Vaccinated (%)
- First Dose Administered (%)
- Partially Vaccinated (%)



Vaccine Uptake by ZIP Code

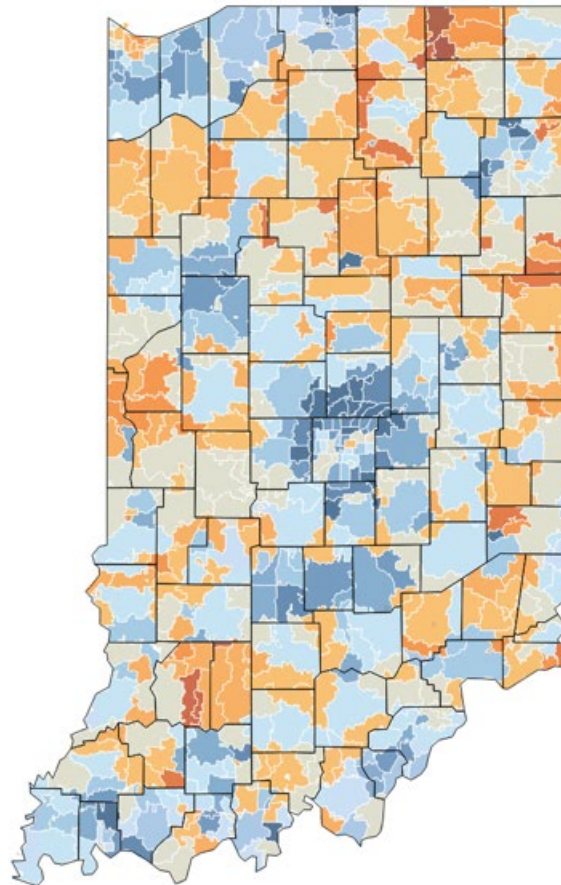
All Time

Includes vaccinations from all time

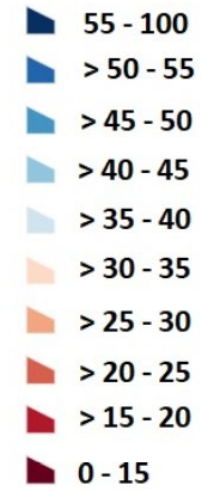


Previous Week

Includes vaccinations through 8/3/2021



Percent of Population,
16 and Over, Fully
Vaccinated by ZIP Code



Multisystem inflammatory syndrome in children

Total Confirmed Cases

104

Age Range

0-21 (Mean 9.7)

Gender Distribution

36.5% Female / 63.5% Male

	<u>Race</u>	<u>Ethnicity</u>
Race	% of Cases	
White	52.0 %	
Black or African American	29.0 %	
Other Race i	21.0 %	
Asian	2.0 %	